



ApoL1 Monoclonal Antibody

| | |
|---------------------------|---|
| Catalog No | YP-Ab-00605 |
| Isotype | IgG |
| Reactivity | Human |
| Applications | WB;ELISA |
| Gene Name | APOL1 |
| Protein Name | Apolipoprotein L1 |
| Immunogen | Purified recombinant fragment of ApoL1 expressed in E. Coli. |
| Specificity | ApoL1 Monoclonal Antibody detects endogenous levels of ApoL1 protein. |
| Formulation | Ascitic fluid containing 0.03% sodium azide, 0.5% BSA, 50% glycerol. |
| Source | Polyclonal, Mouse |
| Purification | Affinity purification |
| Dilution | Western Blot: 1/500 - 1/2000. ELISA: 1/10000. Not yet tested in other applications. |
| Concentration | 1 mg/ml |
| Purity | ≥90% |
| Storage Stability | -20°C/1 year |
| Synonyms | APOL1; APOL; Apolipoprotein L1; Apolipoprotein L; Apo-L; ApoL; Apolipoprotein L-I; ApoL-I |
| Observed Band | |
| Cell Pathway | Secreted. |
| Tissue Specificity | Plasma. Found on APOA-I-containing high density lipoprotein (HDL3). Expressed in pancreas, lung, prostate, liver, placenta and spleen. |
| Function | function: May play a role in lipid exchange and transport throughout the body. May participate in reverse cholesterol transport from peripheral cells to the liver. sequence caution: Translated as Gln. similarity: Belongs to the apolipoprotein L family. subunit: In plasma, interacts with APOA1 and mainly associated with large high density lipoprotein particles. tissue specificity: Plasma. Found on APOA-I-containing high density lipoprotein (HDL3). Expressed in pancreas, lung, prostate, liver, placenta and spleen. |
| Background | This gene encodes a secreted high density lipoprotein which binds to apolipoprotein A-I. Apolipoprotein A-I is a relatively abundant plasma protein and is the major apoprotein of HDL. It is involved in the formation of most cholesteryl esters in plasma and also promotes efflux of cholesterol from cells. This apolipoprotein L family member may play a role in lipid exchange and transport throughout the body, as well as in reverse cholesterol transport from peripheral cells to the liver. Several different transcript variants encoding different isoforms have been found for this gene. [provided by RefSeq, Nov 2008] |



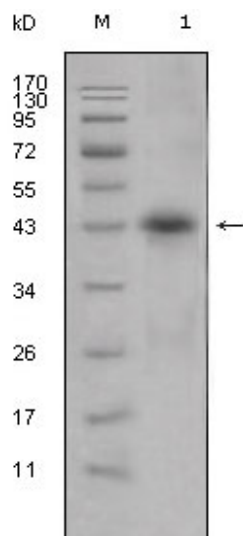
matters needing attention

Avoid repeated freezing and thawing!

Usage suggestions

This product can be used in immunological reaction related experiments. For more information, please consult technical personnel.

Products Images



Western Blot analysis using ApoL1 Monoclonal Antibody against human plasma (1).